



2132 Hollywood Blvd.
Hollywood, Florida 33020
954-774-7702
info@artisfinearts.com
@Artis_Fine_Arts
www.artisfinearts.com

ELISA WUO



Elisa Wuo graduated with a bachelor degree in Art Education and Licensed from FAAP, SP- Brazil, in 1984.

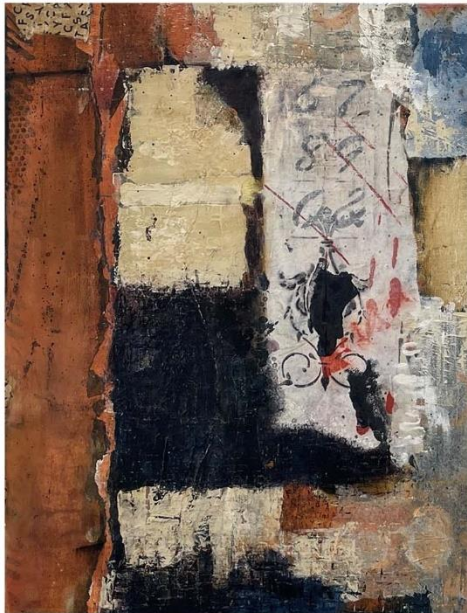
Born in Brazil, she moved to the USA in 1996 where she lives and works as a fine artist for over 25 years.

Her works are in several cities in the state of Florida and in Brazil.
2021/ 2022 - Four group exhibitions between Brazil and the USA.



2132 Hollywood Blvd.
Hollywood, Florida 33020
954-774-7702
info@artisfinearts.com
@Artis_Fine_Arts
www.artisfinearts.com

ELISA WUO



1 & 2 "Thoughtful spaces" #3 & #2. 2021

Acrylic paint, metallic plaster & collage on canvas

31" x 22" x 0.78" \$1,200 (each)



2132 Hollywood Blvd.
Hollywood, Florida 33020
954-774-7702
info@artisfinearts.com
@Artis_Fine_Arts
www.artisfinearts.com

ELISA WUO



3 & 4 "Erosions" Diptych #11. 2021

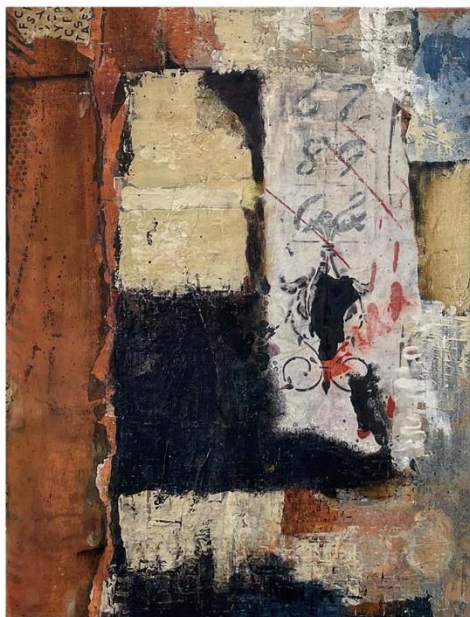
Metallic plaster, acrylic paint, and wall paint on canvas

14" x 28" x 0.78" \$750 (pair)



2132 Hollywood Blvd.
Hollywood, Florida 33020
954-774-7702
info@artisfinearts.com
@Artis_Fine_Arts
www.artisfinearts.com

ELISA WUO



5 & 6 "That which can not be erased #1 & #2. 2022
Acrylic paint & metallic plaster on wallpaper
48" x 30" \$900 (each)



2132 Hollywood Blvd.
Hollywood, Florida 33020
954-774-7702
info@artisfinearts.com
@Artis_Fine_Arts
www.artisfinearts.com

ELISA WUO

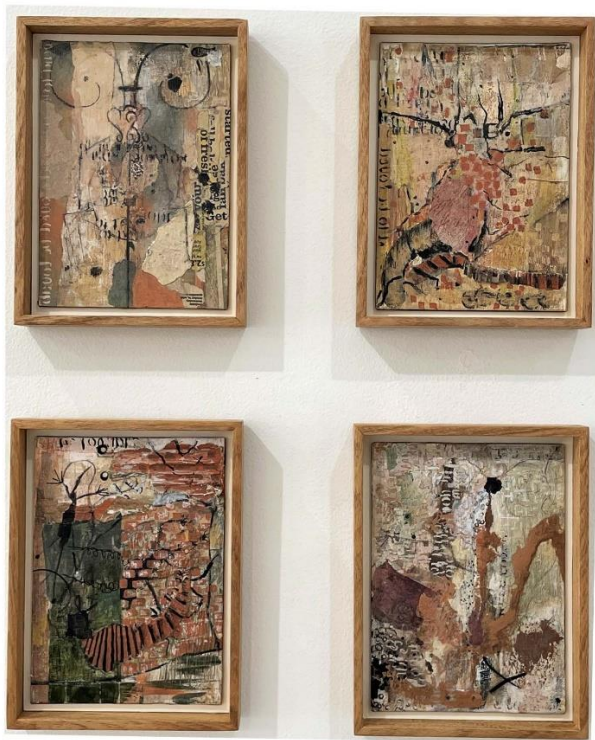


7 "That which can not be erased #1 & #2. 2022
Acrylic paint & metallic plaster on wallpaper
48" x 84" Triptych \$2,500



2132 Hollywood Blvd.
Hollywood, Florida 33020
954-774-7702
info@artisfinearts.com
@Artis_Fine_Arts
www.artisfinearts.com

ELISA WUO



8, 9, 10, 11 Series "Bestiary" #2, #4, #6, #5 2021

Metallic plaster, wall paint, acrylic paint,

and collage on framed panel 7" x 4.7" x 1.5" \$200 (each)



2132 Hollywood Blvd.
Hollywood, Florida 33020
954-774-7702
info@artisfinearts.com
@Artis_Fine_Arts
www.artisfinearts.com

ELISA WUO



12, 13, 14, 15, 16, 17 Series "Unfolding" #7, #6, #5, #8, #1, #9 2020
Metallic plaster, acrylic & wall paint, cement, and
collage on canvas 15.5" x 15.5" x 1.1/4" \$500 (each)

SINCRONIA #5

There is an inherent need in human beings to leave a trail through drawings, words or a simple handprint stamped in the darkness of a cavern. It is as if a primal urge would force them to tell their story, the way they feel it, the way they see themselves, their gods, the homeland, or the landscape; Simple or complex concepts.

Sincronía #5 is mainly characterized by its openness, its diversity. Each work expresses the persistent exploration and experimentation that is indispensable in any search for one's own language.

in addition to sharing the same geographical territorial origin, the five artists taking part in this exhibit: **Betta Santini, Carla Ruiz, Elisa Wuo, Marcia Perasso and Roberta Barros**, share the freedom in their creative gestures, the esthetic pleasure, and the experience of the marvelous transit from the oneiric space to the common space.

Edith Monge Silva

SINCRONÍA #5

Existe la necesidad inherente al ser humano de dejar su rastro a través del dibujo, la palabra o la sencilla huella de la mano estampada en la oscuridad de una caverna. Es como si un impulso primigenio lo obligara a narrar la historia, la suya tal como la experimenta, como se percibe a sí mismo, a los dioses, la patria, o el paisaje. Conceptos simples o complejos.

Sincronía #5 se caracteriza fundamentalmente por su carácter abierto, su heterogeneidad. Cada uno de los trabajos expresa la persistente exploración y experimentación indispensables en toda búsqueda de un lenguaje propio. **Betta Santini, Carla Ruiz, Elisa Wuo, Marcia Perasso y Roberta Barros**, las cinco artistas que componen esta muestra, además del territorio geográfico de procedencia, comparten la libertad del gesto creativo, el placer estético, la experiencia del maravilloso tránsito del espacio onírico al espacio común.

Edith Monge Silva